

Procedure to use Pulse Secure in Windows operating system

Operating System Compatibility:

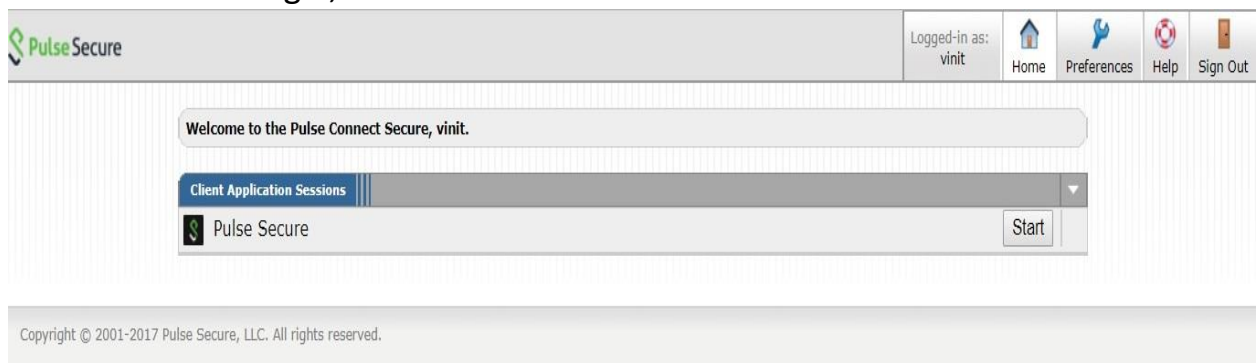
- Windows 7 (32 bit and 64 bit).
- Windows 8 (32 bit and 64 bit).
- Windows 8.1 (32 bit and 64 bit).
- Windows 10 (32 bit and 64 bit).

1. Type the following URL in the browser.

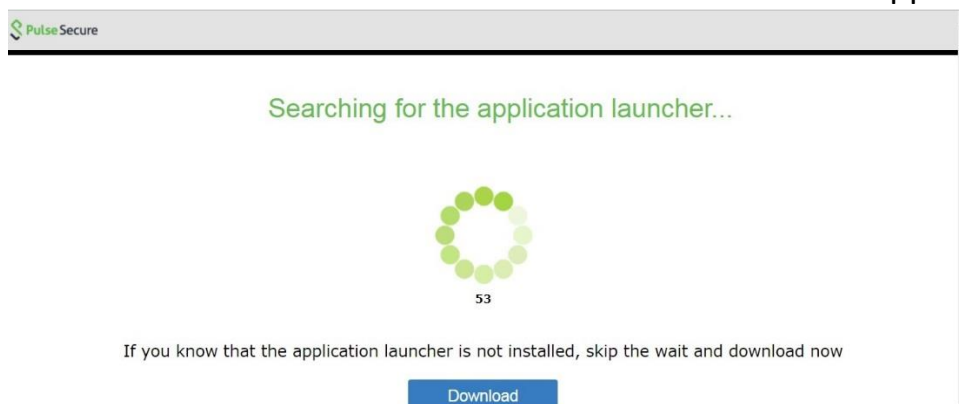
<https://sslvpn.tifr.res.in/tifruser>

2. Log on to it with your credentials.

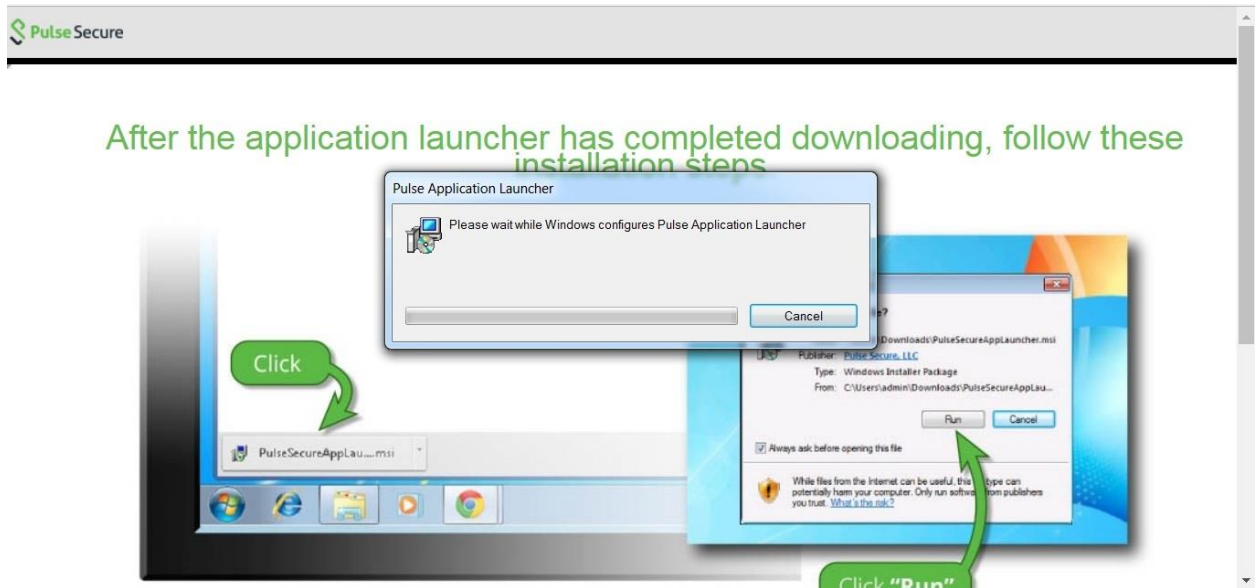
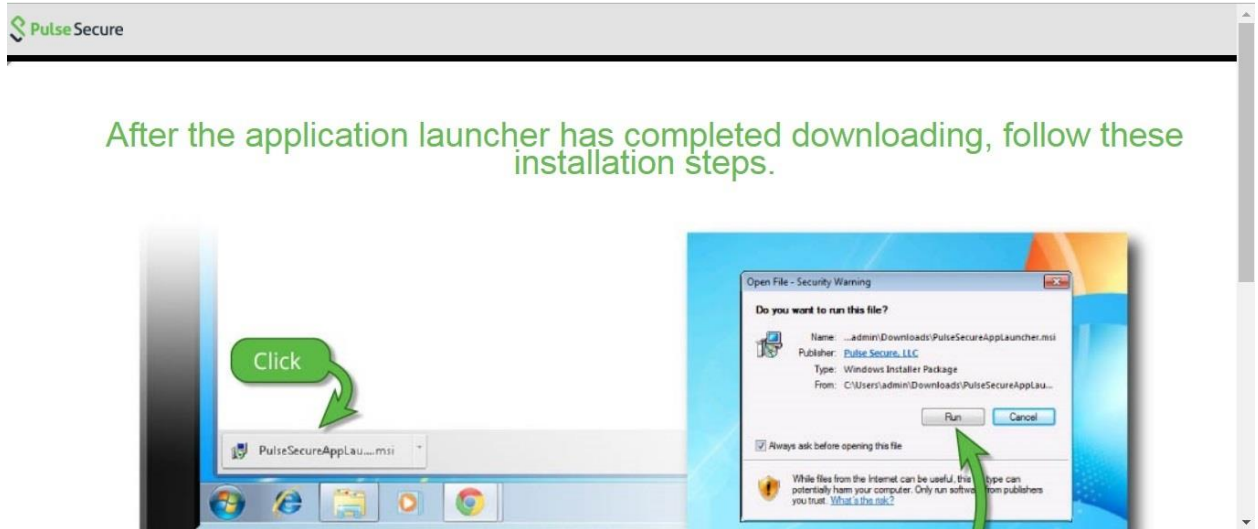
3. After successful login, Click on Start button.



4. Click on Download button to download the “PulseSecureAppLauncher”.



5. Double click the downloaded file to install the same.



6. Click on “Here” button to proceed further.

After the application launcher has completed downloading, follow these installation steps.

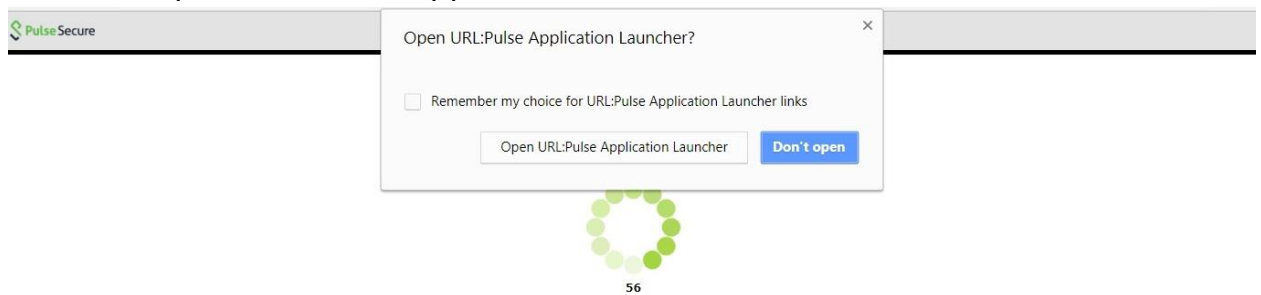


Once you have completed the above steps, click [HERE](#) to continue with the Pulse Secure launch. We recommend selecting "remember" and "always" during the installation process.

Once the Pulse Secure application is installed and started it will appear in your system tray.



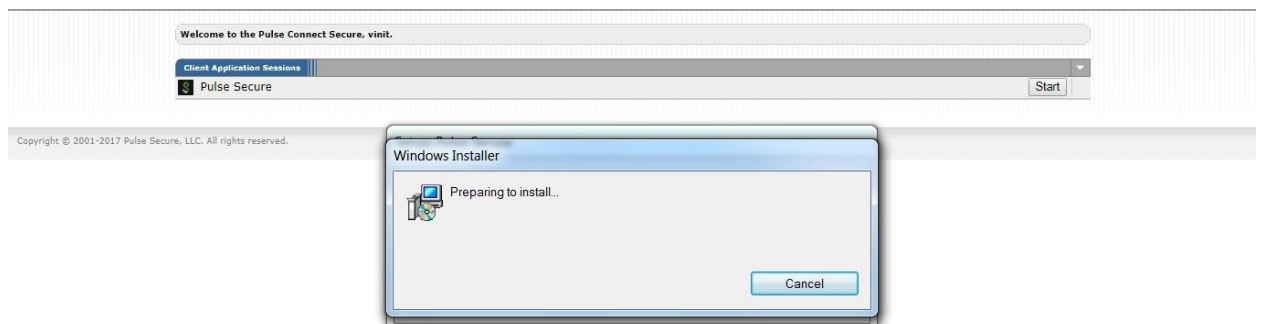
7. Click on “Open URL: Pulse Application Launcher”.

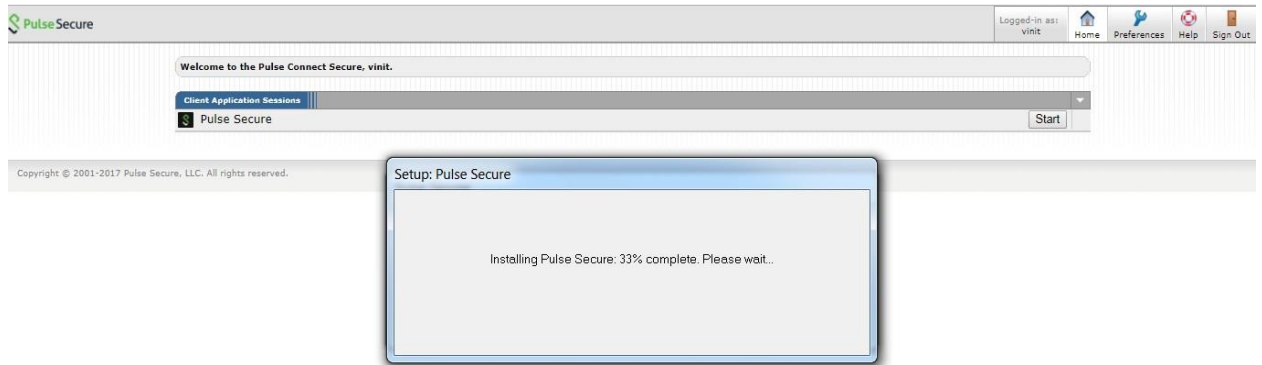


If you know that the application launcher is not installed, skip the wait and download now

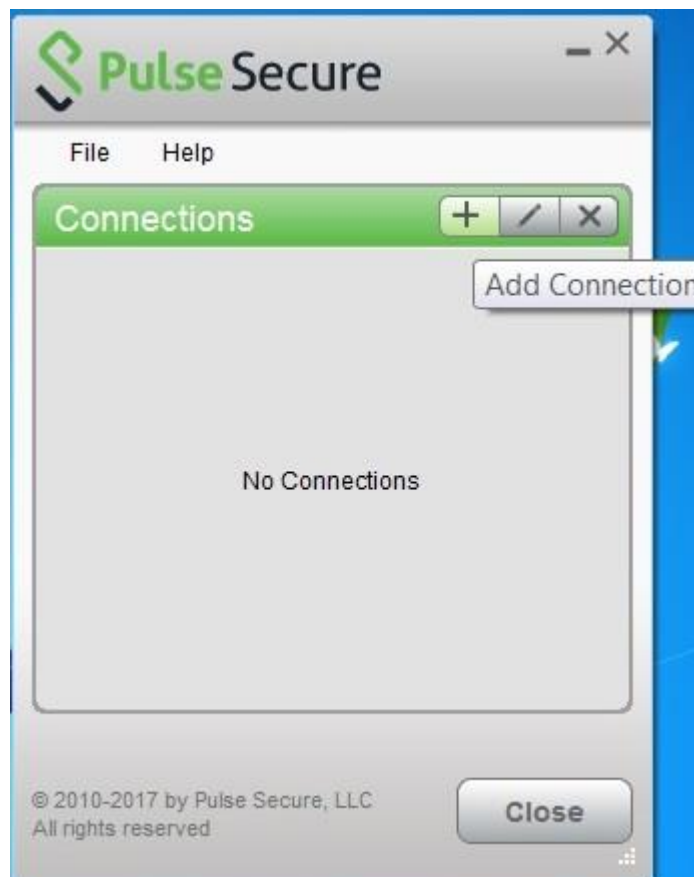
Download

8. Installation Process starts.





9. After successful installation, a default connection will be setup in the Pulse Secure. Click on Cancel and Sign Out from the session. Now search for Pulse Secure in your machine. Delete the default connection by using (x) symbol. Now click on plus (+) symbol to add the following connection as showscreenshot.

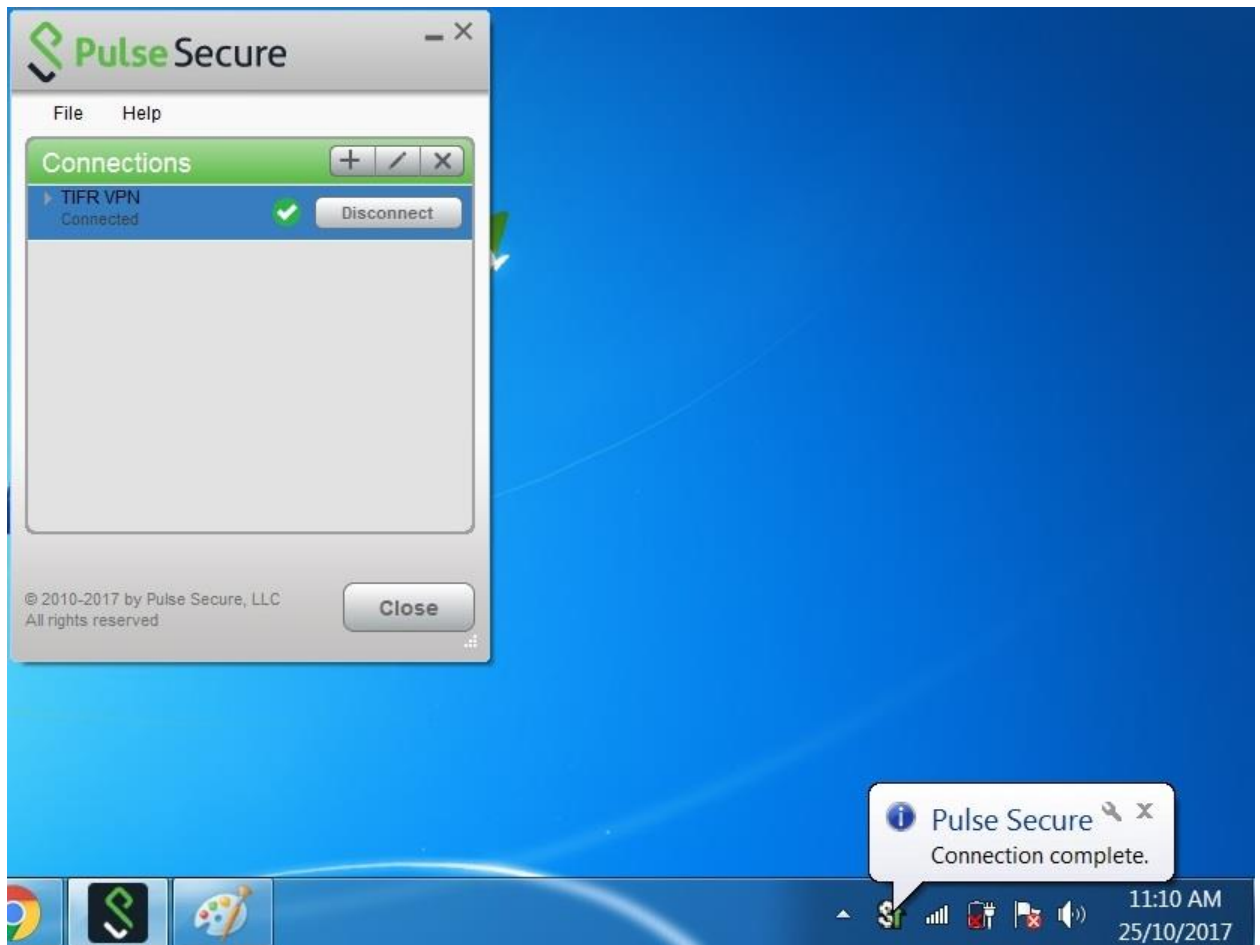




10. When you click on Add button, the connection will be created. Click on Connect button it will ask you for the credentials. Log on with your credentials to establish the SSL-VPN connection.



11. Finally a message will be displayed as Connection Complete.



Note: Once the client gets install properly, no need to login via browser every time. Just use the client to connect to the SSL-VPN.