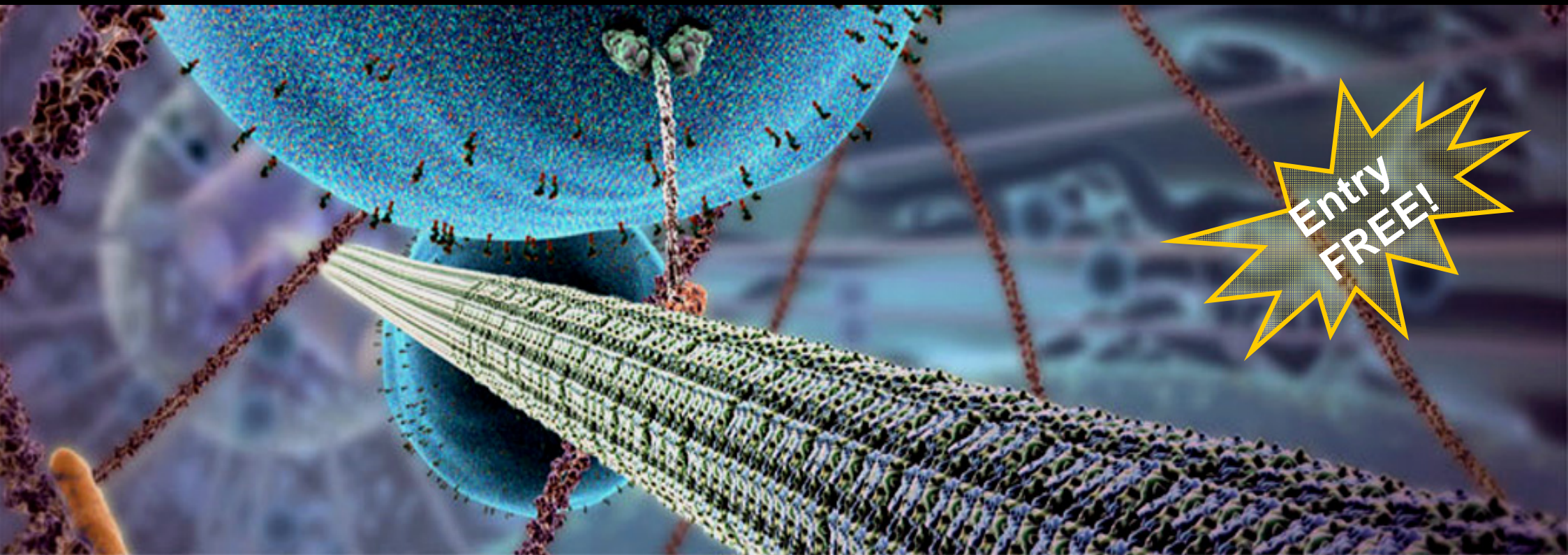


Motions of Life: *Inside a living cell*

Dr. Krishanu Ray, TIFR

A peep inside cells reveals a fantastic world of tiny biological machines called "motor proteins" that "walk" along rope-like protein "highways" and carry materials from one part of the cell to another. Come and find out!



Entry
FREE!

TIFR @ Prithvi
Chai and Why?

Chai and Why? a discussion of scientific issues in an informal setting!

Prithvi Theatre

11am Sunday Mar. 1, 2009

HOMI BHABHA
1909-1966



CENTENARY